

NEW SOUTH

Architecture

Urbanism

Anthropology

NEW SOUTH

**New South is an
architecture, urban
planning and
anthropology practice
based in Paris and
Brussels.**

**We put the margin at the
center.**

Founded by Meriem Chabani and John Edom
contact@newsouth.fr
www.newsouth.fr

Société
du Grand
Paris



Services

Architecture
Urban planning
Community engagement
Strategic programming
Interiors and Scenography
Object Design

Awards

2024 Finalist, Wheelwright Prize
2024 Villa Albertine Fellowship
2023 Named 20 Best Women Architects in France, AMC
2023 Graham Foundation Grant, Chicago
2021 Winner of FAIRE, an innovation accelerator by the city of Paris and Pavillon de l'Arsenal
2020 Europe 40 UNDER 40
Since 2019 Expert with the French National Federation of Urban Agencies for the Africa-France 2020 summit and the World Urban Forum
Since 2019 Member of the committee of the Maison de l'Architecture Ile-de-France
Since 2019 Board member of Theatrum Mundi Europe, under the direction of Richard Sennett
2020 2nd price at the CAUE Calvados competition «For a reuse of derelict churches in France»
2017 First Prize, European 14, project 'Productive articulations' in Guebwiller, FR
2014 Holcim Awards for Sustainable Development, Next Generation
2013 First Prize, Grand Prix of the Fondation Jacques Rougerie

SACRED GROUNDS

→ Contending with the Secularocene

RELIGIOUS AND CULTURAL CENTER (PARIS, FR)



Located in the 11th arrondissement of Paris, the project consists in the creation of a new religious and cultural centre in Paris, in a context of tense relationships between the French government and local muslim communities and organizations. With this in mind, the project was designed in close proximity to the people it will serve, while carrying the ambition to create the “first” French Mosque - rather than another pastiche or attempt at “modernizing” traditional architecture from North Africa or the Middle East.

The new centre integrates many uses intended to meet the specific demands of a French congregation in all its diversity, in addition to creating programs that accommodate secular activities in a variety of spaces: multifunctional rooms, library, exhibition spaces, shop, offices. There are no walls partitioning the spaces. Instead, curtains of soundproof fabric are used to create modular and fluid spaces that evolve throughout the day - mirroring the rhythm of worship.

With a contemporary architectural language in harmony with the site’s history and urban context, the project is a demonstration of how sacred and profane spaces may coexist and animate our cities.

Several innovative construction approaches are used in the building: a timber structure, a mobile curtain facade system that filters natural light, and natural ventilation systems for improved air quality and thermal regulation.

A public consultation with residents of the area has been initiated in order to make the project development as transparent as possible and inscribe the building fully within its Parisian site.

Client
Foi et Pratique

Architect
New South

Engineer
SBP

Assistant to client
AMOsq

Budget
10M €

Size
2 000m²

Year
2022-2026

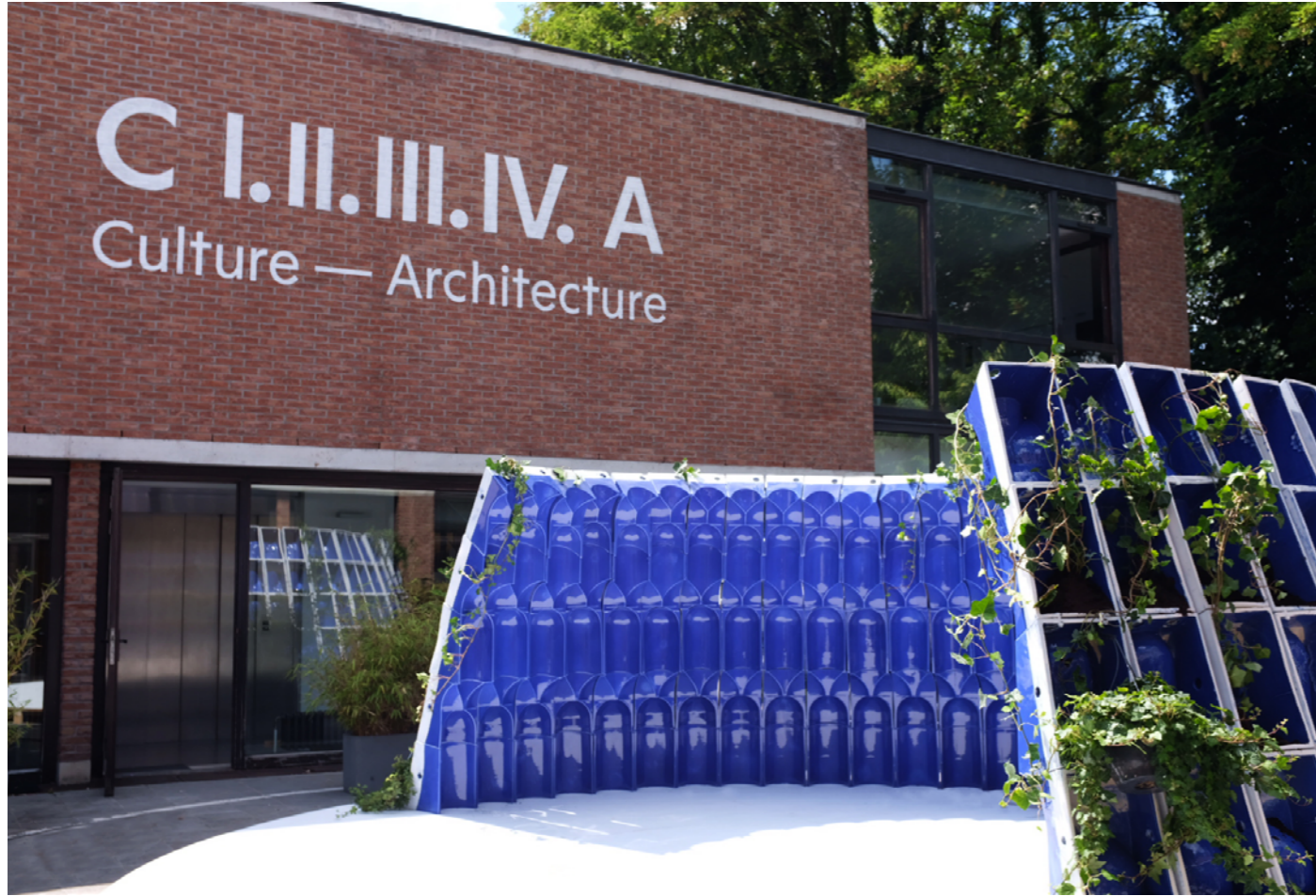


RELIGIOUS AND CULTURAL CENTER (PARIS, FR)



The opening and closing of the facade curtains tell the story of the evolutive uses inside : from sacred to profane, and profane to sacred

MUQARNAS (BRUSSELS, BE)



FIRST PARTIAL PROTOTYPE AT THE CIVA, BRUSSELS

During the summer of 2022, New South was invited to present the outdoor installation Muqarnas on the terrace of CIVA (Brussels), interrogating the sacred and its meaning for public space and life. Muqarnas is a decorative molding applied to a ceiling vault, common to many local variants of traditional Islamic architecture. New South transforms the Muqarnas from a decorative item into a cutting edge structural system developed in collaboration with engineers and craft makers. Formed by interlocking pieces, it is designed using parametric computational tools and fabricated in industrial grade ceramic.

The half cupola positioned on the terrace of CIVA aims to trigger a conversation around sacred architecture as a field for invention centering the narratives originating from the Global South. In secular societies, the sacred has all but disappeared from the urban realm, often confined to those specific spaces socially isolated, topologically remote, and relatively empty. Muqarnas is a call for cities to reinvest in the notion of the sacred bringing about the process of regeneration, care and sanctuarization for the built and natural environment. Can new forms of shared guardianship in the urban realm allow for sustainable practices in our cities? The restoration of a sacred covenant between people, places and the environment establishes a framework for the creation of value outside the logic of development driven utilitarianism of the urban environment.

From June to September 2022, the pavilion acts as a stage for debates, performances, education and encounters. Muqarnas is a collaboration between New South (Algiers, Paris), Radhi Ben Hadid (Tunis, Paris) and Gorbon Ceramics (Istanbul) that aims to re-establish building innovation as central to contemporary Islamic architecture. This work is a study for the bigger project by the New South — the reconstruction of a mosque in the XI Arrondissement in Paris.

Commissioner
CIVA, Brussels

Architect
New South

Engineer
Radhi Ben Hadid

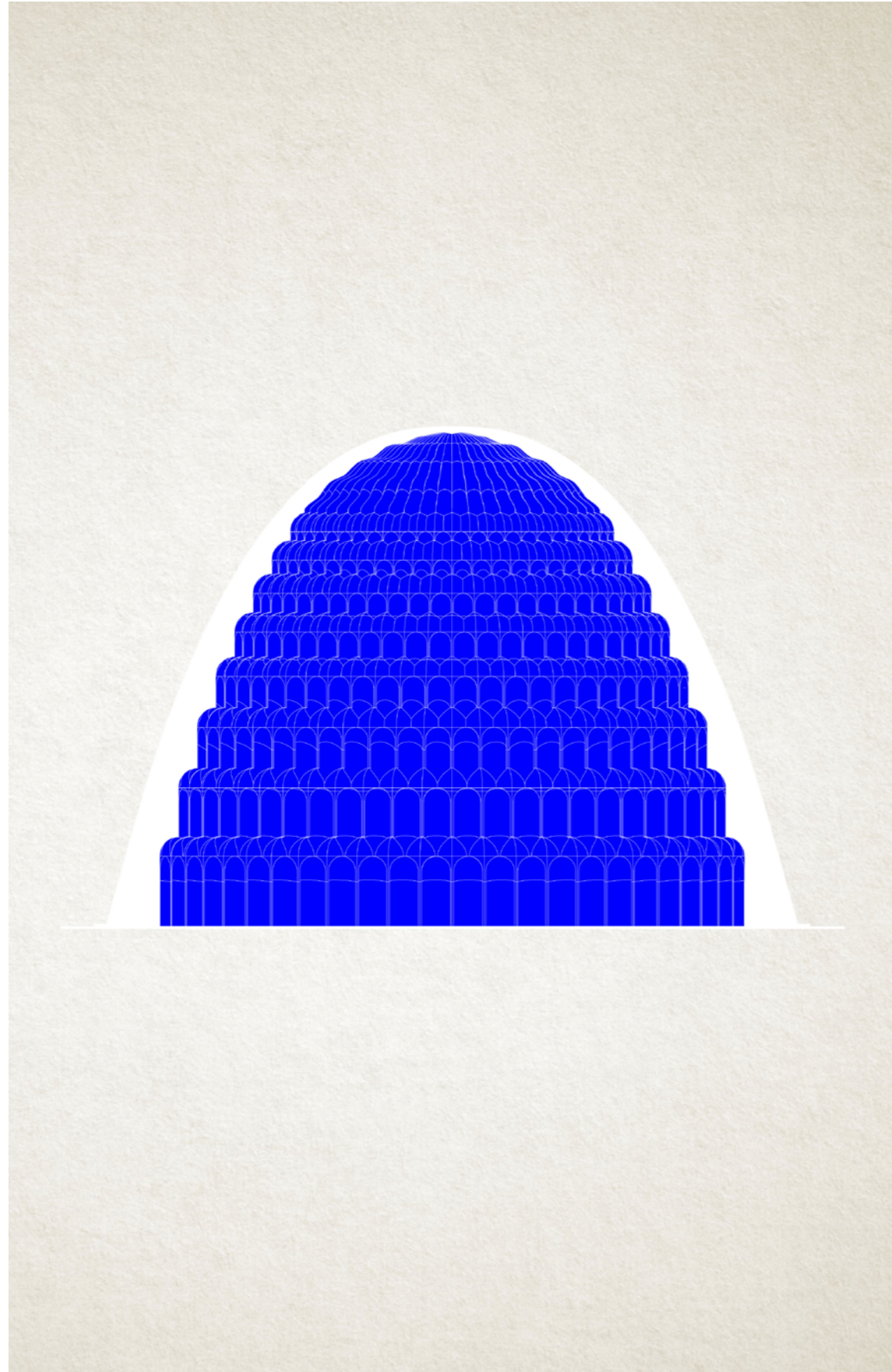
Production
Gorbon Ceramics

Budget
20k €

Year
2022



MUQARNAS (BRUSSELS, BE)



Final structure to be built at ENSA Saint Etienne in 2024

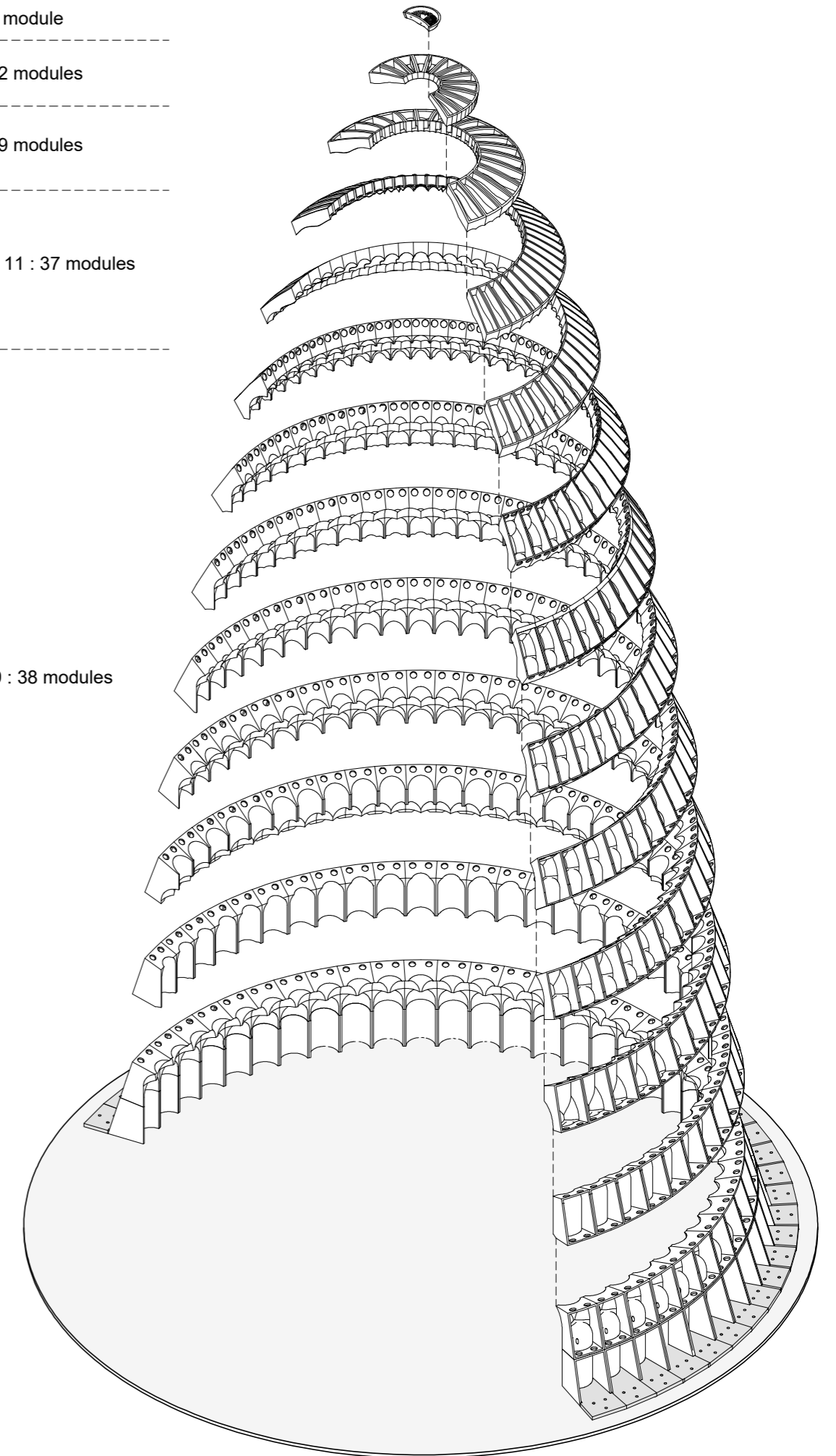
strate 14 : 1 module

strate 13 : 12 modules

strate 12 : 19 modules

strates 10 & 11 : 37 modules

strates 1 à 9 : 38 modules



KURSI (DOHA, QA)



AN AMBIGUOUS SACRED SPACE

Commissioned by Design Doha, kursi imagines furniture as an invitation to gather. Simple stools can be placed together or scattered in the space, allowing people to pass time in conversation or quiet contemplation. When the time comes to pray, the stools can be placed to form a square, or stacked in four columns to mark out a sacred space, recalling Ottoman mosque minarets and the geometrical designs inherent to diverse Arabic decorative forms. The movable character of furniture calls for the creation of a sacred space for prayer, installing shared intention and action as the core of envisioning, making and sustaining the sacred.

The piece consists of 12 glazed ceramic stools (two examples of six formal variations), each measuring 45 cm in height, between 40 and 50 cm in diameter and each weighing approximately nine kilograms. The upper seat surface of each stool is in glazed using an individual and distinct colour of blue green glaze developed specifically for the piece. The lower section of each stool variation has a different geometrical form and is left unglazed in a distinctive rugous red clay finish. Each stool is finished with a thin cork base and interior sleeve in order to protect it when placed on a hard floor or when stacked.

Commissioner
**Design Doha
Biennial, Qatar**

Site
M7
museum, Doha, Qatar

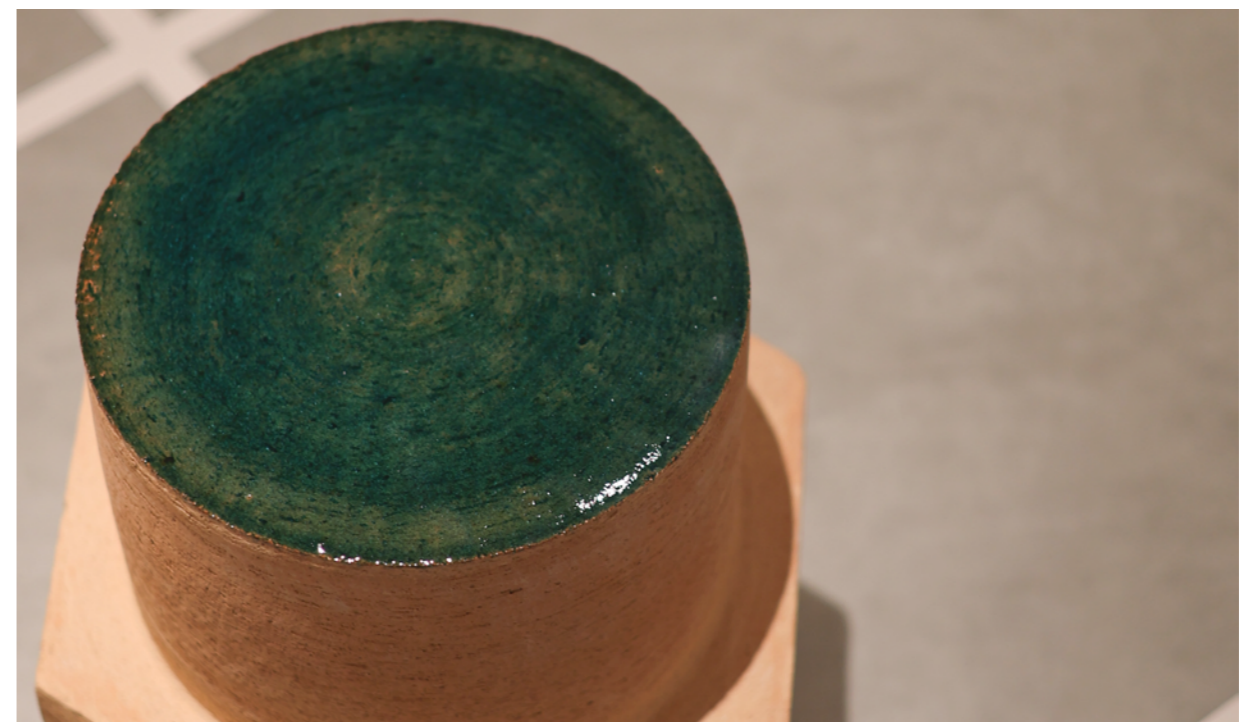
Curation :
Rana Beiruti
Tala Alhaj

Team New South :
Meriem Chabani
John Edom

Production :
Gorbon Ceramics

Photos :
Edmund Sumner
Abdelaziz ALSafadi

Date
2024



COMMON GROUNDS

→ Building and strengthening communities through design

SWANN ARR CULTURAL CENTER (TAUNGDWINGYI, MM)

CREATION OF A CULTURAL CENTER IN RURAL BURMA

The project is located in the rural township of Taungdwingyi, Burma, and is led by a group of local residents who wish to support culture in an area marked by autarky.

The new center hosts diverse but complementary programs: cinema, covered market, exhibition space, multipurpose rooms, offices, café and media library. A staircase walkway distributes these different programs, connecting the whole to the public space and offering visitors unobstructed views of the surrounding landscape.

The three-story building makes use of local materials, implemented through a collaborative design process between architects and local businesses.

Careful attention was paid to architectural details to minimize the time and cost of materials to be brought to the site. Numerous visits to local warehouses were made to source materials for reuse. Apart from a primary structure of artisanal concrete chosen for reasons of seismic requirements, the project is built with a system of brick, bamboo and wood modules which are realized in-situ and with the inhabitants.

Thought from the beginning as a co-design to be carried out between architect-customer-manufacturer-artisan-contractor-teacher, the project proposes an innovative but pragmatic model of associative cooperation in a country where the policy is not concerned with supporting creative and cultural projects outside of large cities.

Design and construction workshops were held throughout the building's construction, encouraging the exchange of ideas, and allowing the problems encountered to be solved and debated, with the aim of the project by its occupants.

Client
Swann Arr Group

Architect
New South x sÔne

Local Architect
Statement

Assistant to client
Kathy Kine

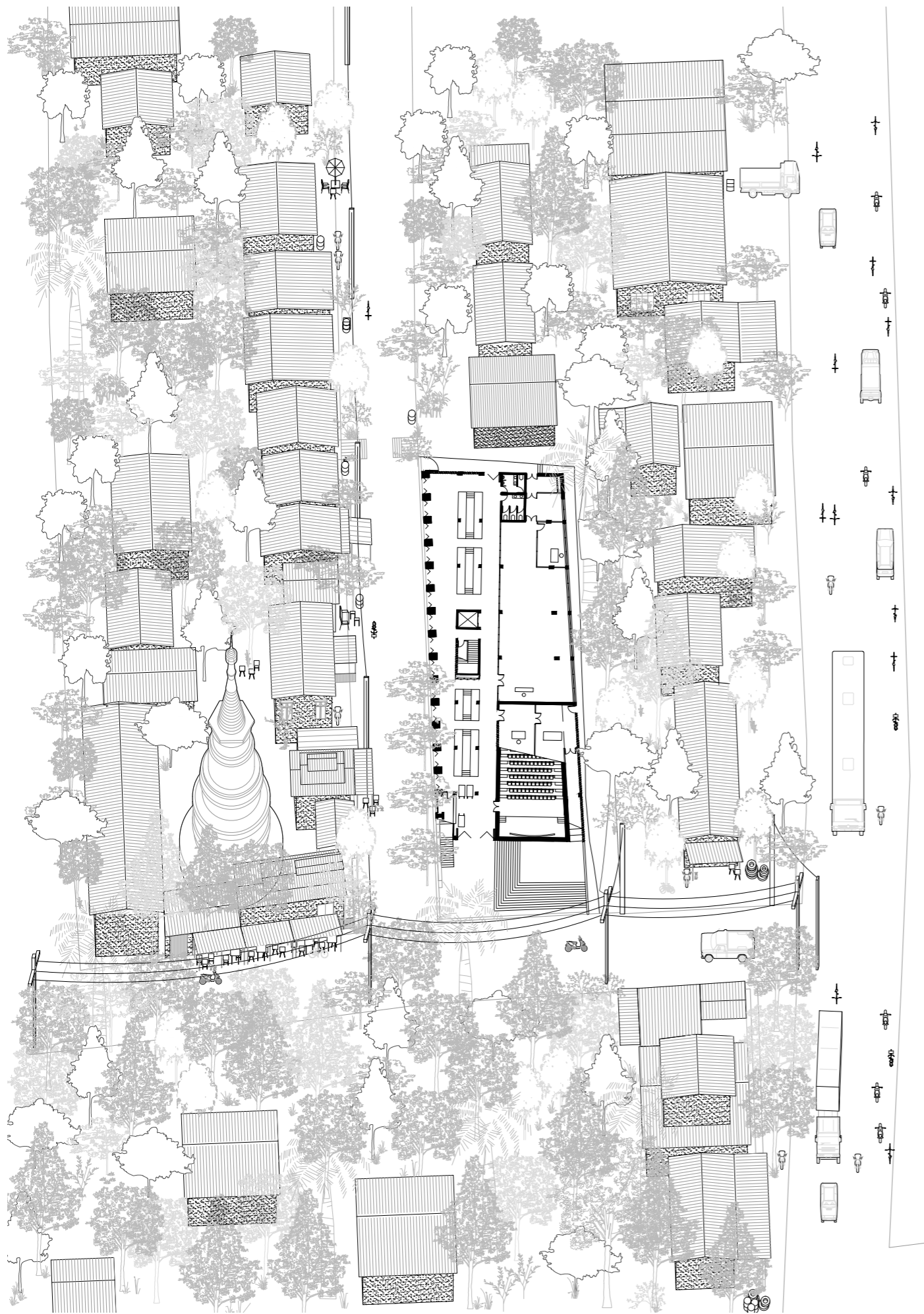
Budget
2.5M €

Size
3 000m²

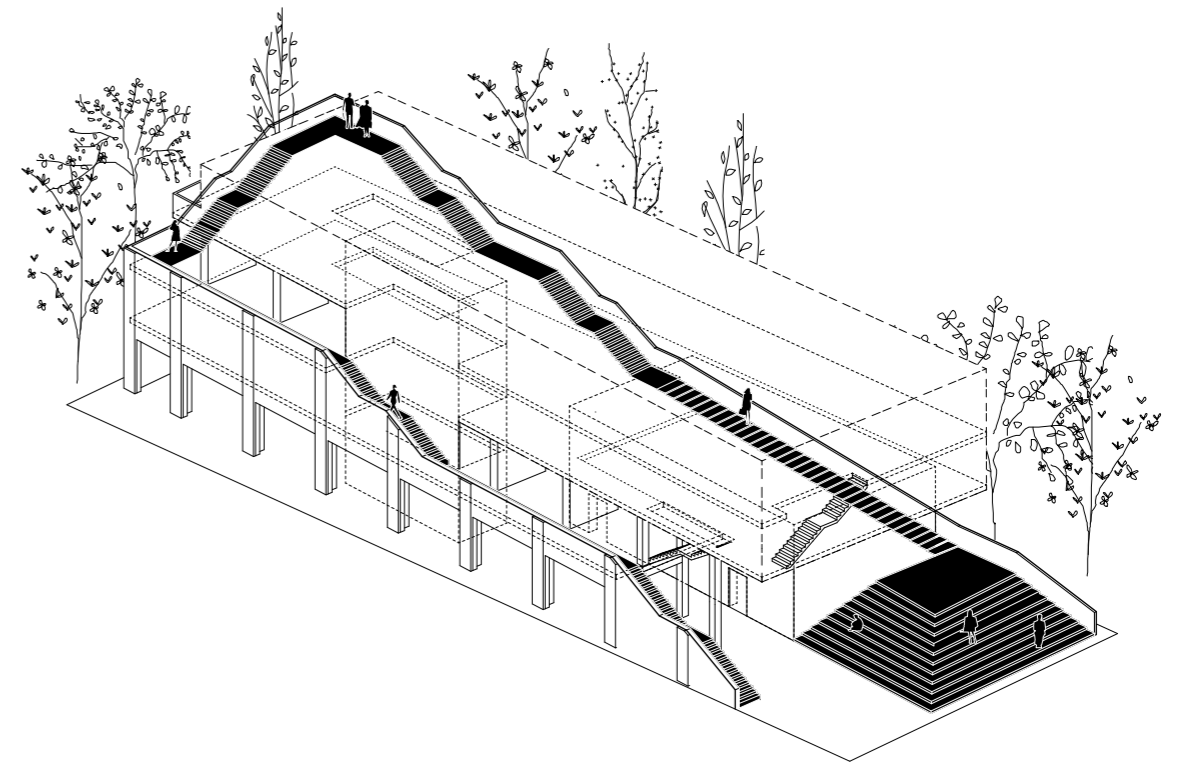
Year
2016-2022

Photos
Nyan Zay Htet

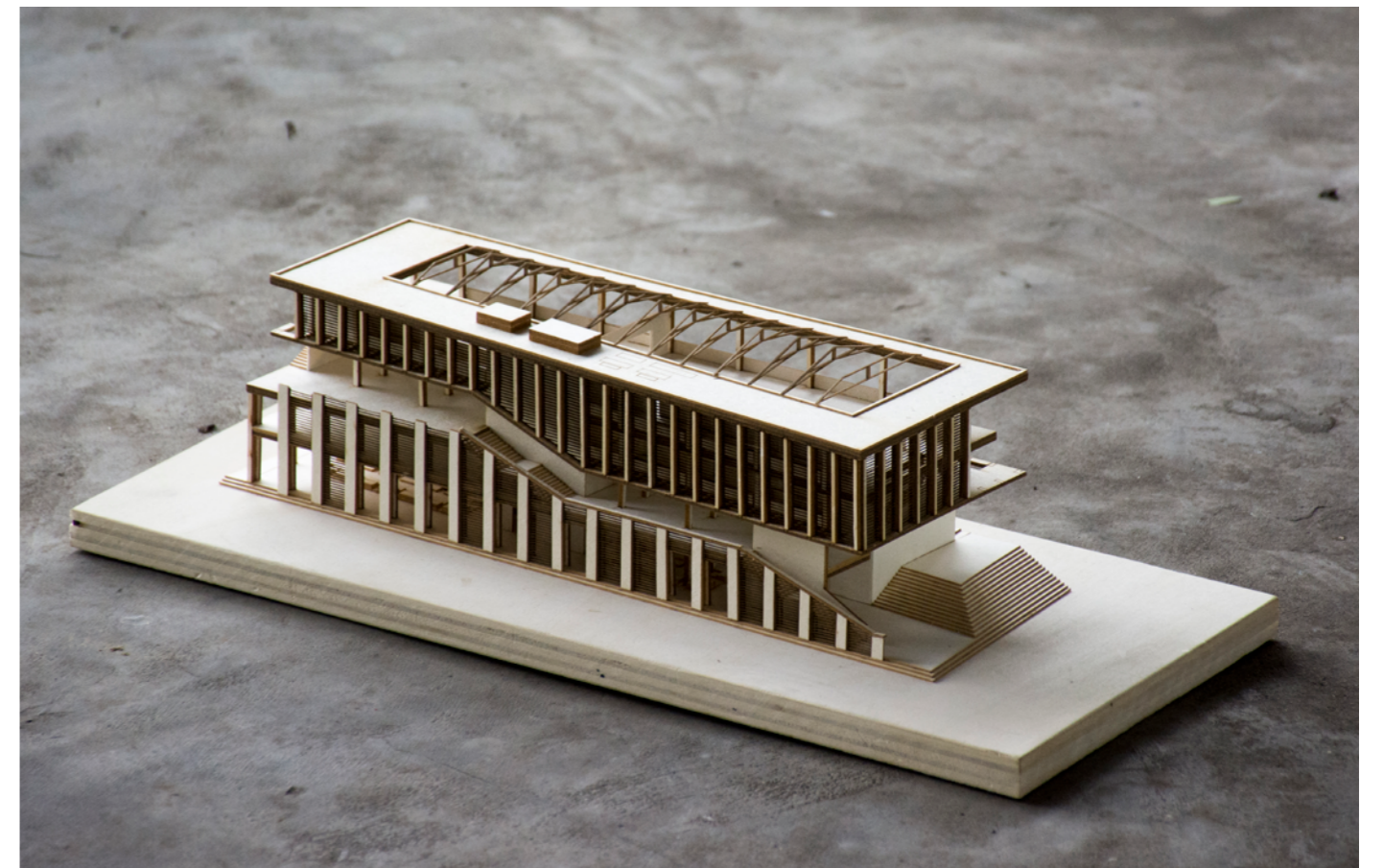




→ L'escalier de distribution dispose des coursives généreuses appropriées par les habitant.e.s

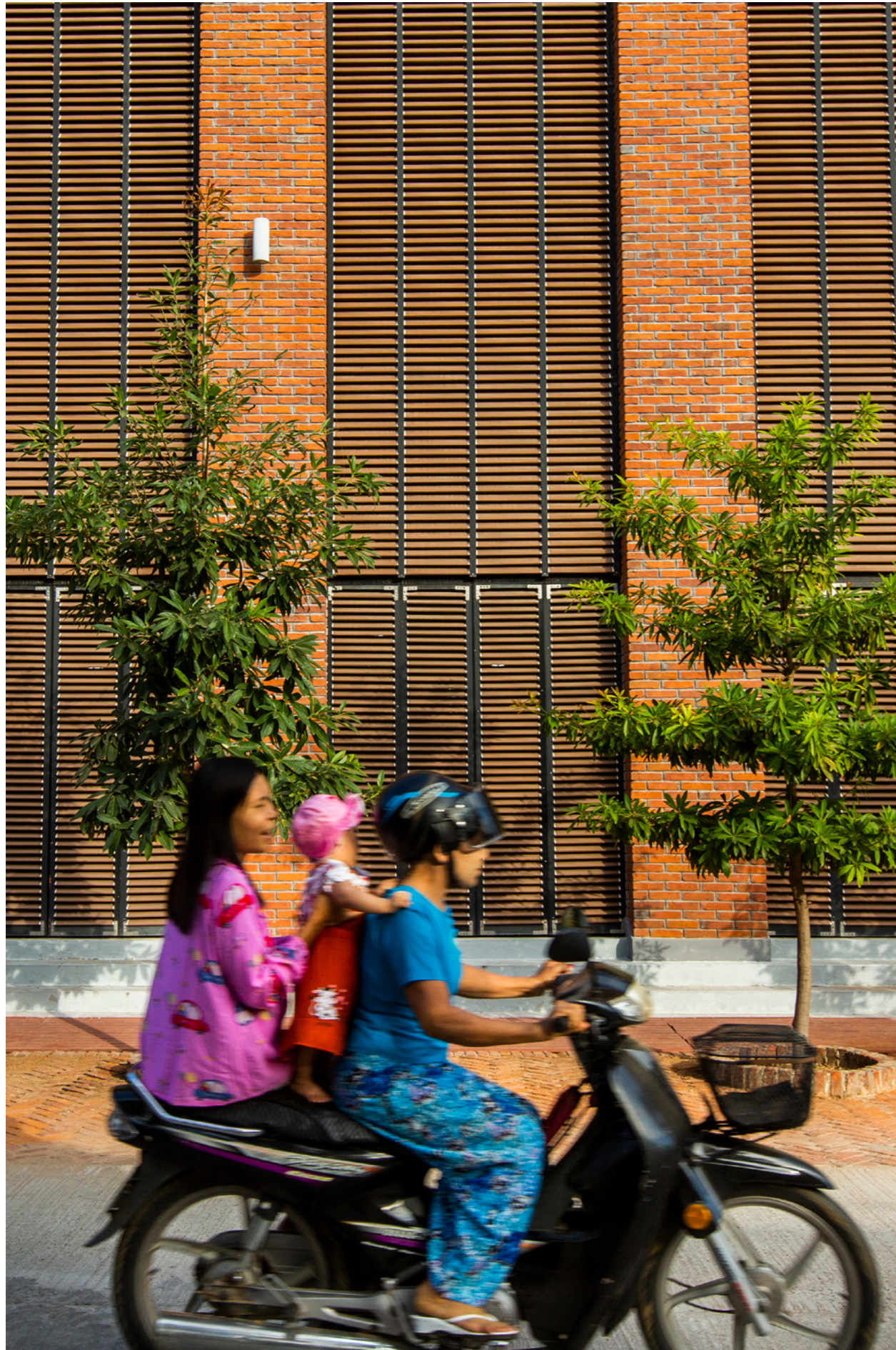


→ Un escalier marque l'esplanade et distribue l'ensemble des programmes culturels, offrant un espace public



→ Malgré des réticences liées aux pratiques constructives habituelles, la MOA accepte d'opter pour une brique locale laissée nue en façade.

CULTURAL CENTER (TAUNGDWINGYI, MM)





→ The generous width of the monumental distribution staircase is appropriated by the residents, and becomes a public space in its own right



CULTURAL CENTER AND MASTERPLAN (DEERLIJK, BE)

RESTRUCTURING AND EXTENSION OF A THEATER INTO A MULTI-PURPOSE CULTURAL FACILITY

The strategy for implementing the new cultural center is simple but contextual. The objective of the project is to work carefully with what is already there (preserving the envelope of the existing building and its stairs) while doubling its volume to the west. Its subsequent extensions to the north and south are dismantled, which allows the elongated Neunkirchenplein to be reclassified into two complementary qualitative public spaces. is a permeable and crossing infrastructure, with two heads. The location of the programs on the ground floor makes it possible to activate the two adjacent public spaces:

on the forecourt side, the entrance to the theater creates a new signal from the square and from the road, while the foyer and the kitchen can widely extend their activities (terrace, barbecue, children's games) in the peaceful environment of the garden.

Theaters are generally designed as hermetic buildings, creating a "blackout" from urban conditions. The new cultural center is, on the contrary, imagined as an extension of the urban fabric. In this sense, an interior street connects the two adjacent public spaces and provides access to all the different entities, while being largely sized to be a place of welcome, exchange and creation. The existing ivy is preserved and a footbridge, inspired by theater backstage, provides access to the balconies and first floor.

A regular and generous square grid of 6 meters is adopted throughout the building. The primary structure is designed in concrete to achieve sufficient spans and with budgetary concerns in mind. The secondary structure is a lightweight wooden skeleton, composed of LVL wooden beams. The total embodied carbon of the structure is minimized without compromising sustainability. The facade cladding is made of burnt wood. This hybrid, project-specific design is designed to combine and optimize robustness, repeatability, flexibility and durability.

Client
City of Deerlijk

Architect
New South

Engineer
BERIM, Agi2D

Landscape design
LOKUS

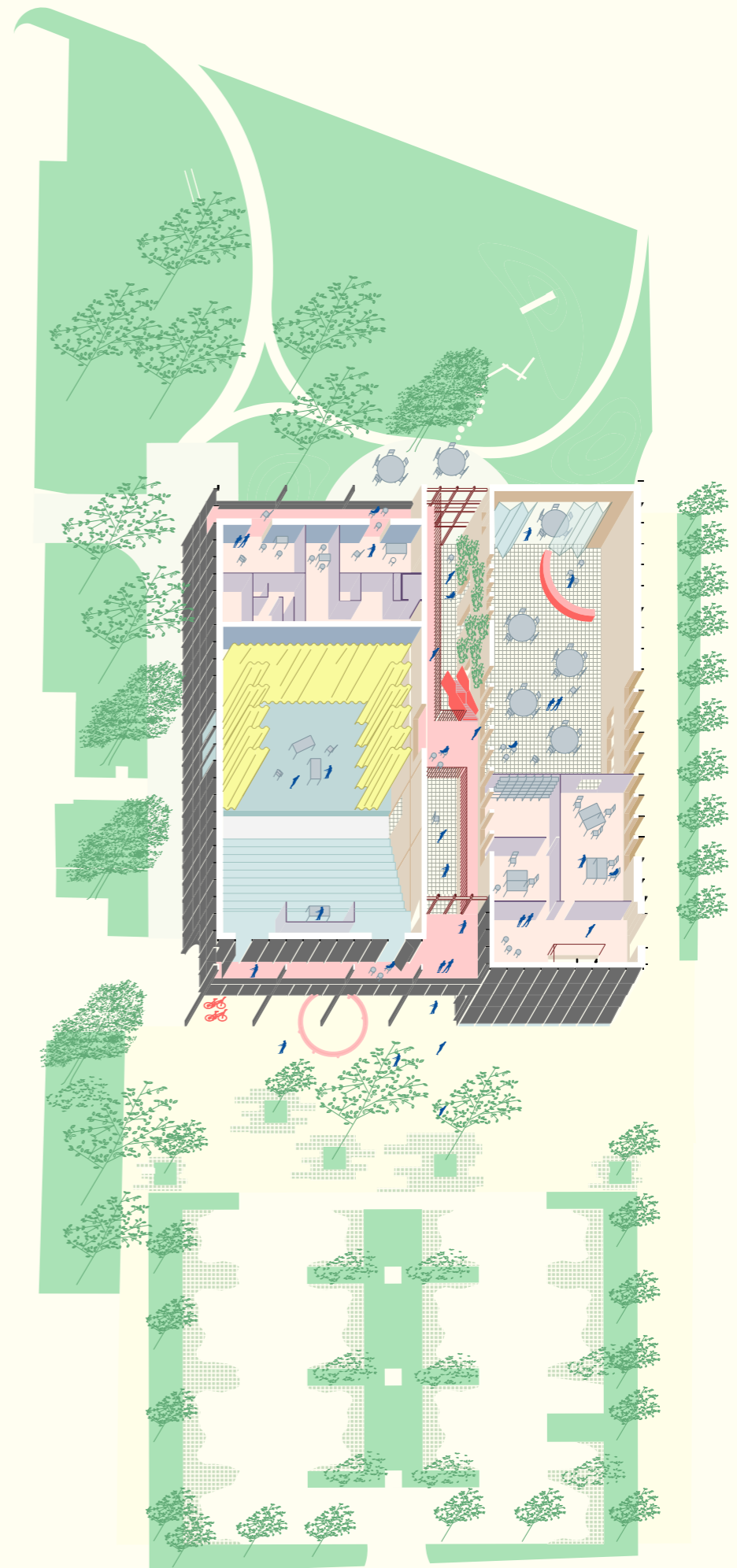
Budget
5M €

Size
2 000m²

Year
2024 - 2027

Location
Deerlijk, BE





TRAINING CENTER (PARIS, FR)



TRAINING CENTER FOR IMMIGRANT WOMEN IN THE GREATER PARIS AREA

Goutte de Lait is a pioneering facility for the health of women and children in Pantin, France. Continuing this story, our project is a new sustainable catering, training, and professional reintegration offer for and by women. The Maison Mère promotes the economic independence of mothers in precarious situations.

This program is expressed through a modest project that values the existing building. The facades of the Art Deco building are preserved, and a new facade is recomposed by reusing the ceramic grid at the front. Meanwhile, we wanted to clarify the circulation scheme to recompose a coherent entity and deploy an edible garden on three levels, connected to a refreshing patio.

Given the depth of the building, we propose recomposing the garden extension with a wooden structure glass roof, providing a functional winter garden and a source of natural light for interiors that are currently relatively dark.

The landscape project is developed under the common theme of "the edible garden," which will directly supply the building occupants.

Client
LSRE + De Watou

Architect
New South

Engineer
BERIM, Agi2D

Landscape design
LOKUS

Budget
3M €

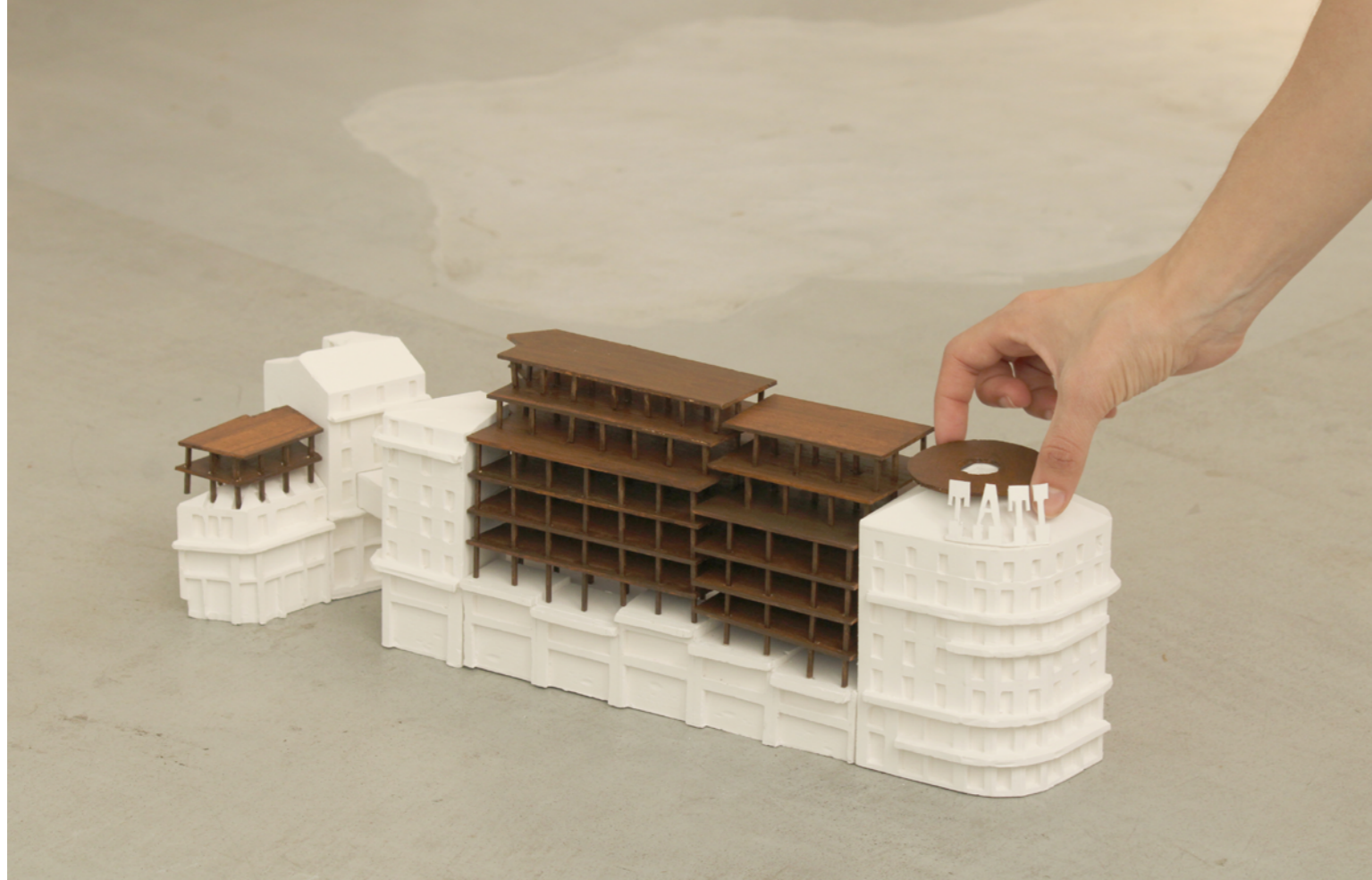
Size
1 200m²

Year
2023-2026

Winning project



TRANSFORMATION IN WORKING-CLASS NEIGHBORHOOD (PARIS, FR)



TRANSFORMATION OF TATI BARBÈS

The Barbès neighborhood is a renowned working-class, multicultural hub in Paris. Tati is a retail company famous for its cheap prices, and its appeal for immigrant populations. As the business closes down, a new chapter needs to be written for the neighborhood. Barbès is in constant movement, and Tati makes it an event. The Tati edifice was the object of a consultation within the framework of Reinvent Paris 3.

The existing building is the result of a gradual construction of individual Faubourgian buildings that have become a single entity. This formal mix echoes the cultural diversity of the neighbourhood and unfolds as a place that is multiple and infinite.

We propose a project that is mixed, rhythmic and deeply anchored in the neighbourhood and its cultures. A small island that becomes a world.

The cycle of collections and collaborations is the beating heart that follows the movement of the the neighbourhood's nomads. Working inhabitants, vendors, consumers, voluntary and involuntary nomads.

In our proposal, the edifice and its ends are preserved, its significant built heritage valourised and a vertical extension using a light wooden structure is added at its centre. Inscribed in the sloping site, the project uses a stepped slab that follows the beat of the current parcel subdivision. The construction method of the vertical extension integrates techniques that favour natural, renewable materials: the structure is prefabricated off site and hems is used for insulation. The result of meticulous analysis, the project aims to preserve a maximal amount of the existing building and its history, and of the urban character to which it is a witness. It also integrates in parallel the need to articulate a composition that is both architecturally and functionally coherent.

Site
Paris, France

Program
**Food court,
commercial space,
cultural space,
offices, housing**

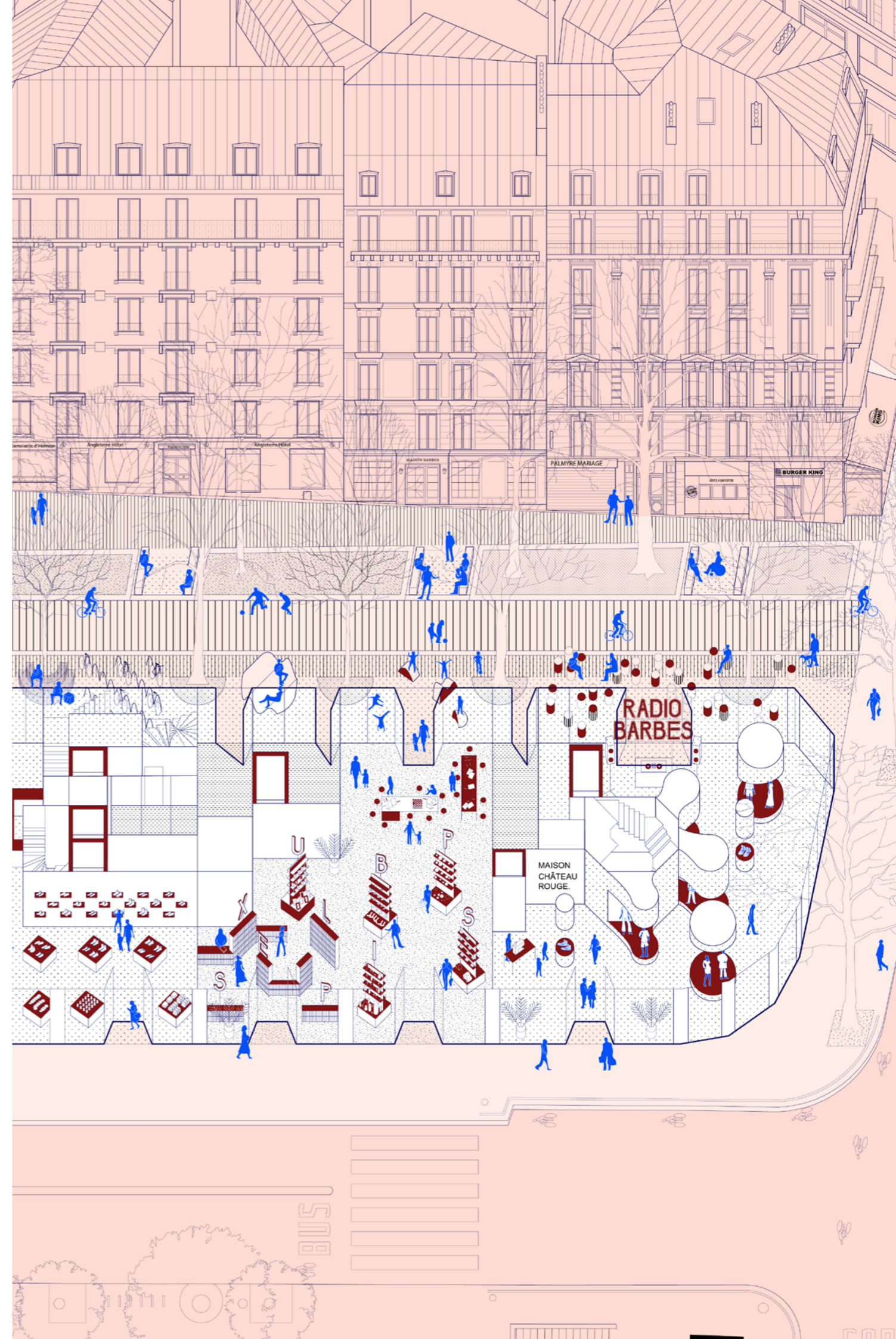
Dates
**2021, Finalist
Reinvent Paris**

Client
Nexity SEERI

Team
**Palast + New
South, YM
Ingénierie,
Albert&Co**

Size
8 000 m²

Budget
20 m €



TRANSFORMATION IN WORKING-CLASS NEIGHBORHOOD (PARIS, FR)



INCLUSIVE CITIES

→ From children to the elderly, designing for vulnerability

STUDY - AGING IN THE CITY



“LE PRINTEMPS DE L’HIVER” A RESEARCH PROJECT AROUND AGING ON THE TERRITORY OF THE EPA MARNE/EPA FRANCE, IN THE GREATER PARIS AREA.

This study takes senior citizens as its starting point. What are their backgrounds – both personal and residential? What are their ways of living? Their expectations? What are and what will be the different housing standards for this generation? What economic models can be envisaged and for which dedicated services? And finally: how to make our cities places of generational diversity? What are the urban and architectural criteria for achieving an inclusive city?

From the sensitive to the concrete, this book summarizes the issues relating to the demographic change in progress, and formulates recommendations for implementation for tomorrow. Its main objective is to put housing for seniors at the heart of planning issues in our cities. It is aimed at everyone, public and private organisations.

Above all, Le Printemps de L’hiver is based on one-on-one interviews. They were transcribed and concisely reproduced in this book. The recordings were also used to create podcasts, made available online. The study includes: a field survey of seniors located in Ile-de-France, an analysis of spatial typologies and devices, an atlas of national projects and a book of recommendations. Following this study, 10 housing adaptations are underway.

Commissionner
**EPA Marne/
 EPA France,
 AG2R, Maison de
 l’Architecture IDF**

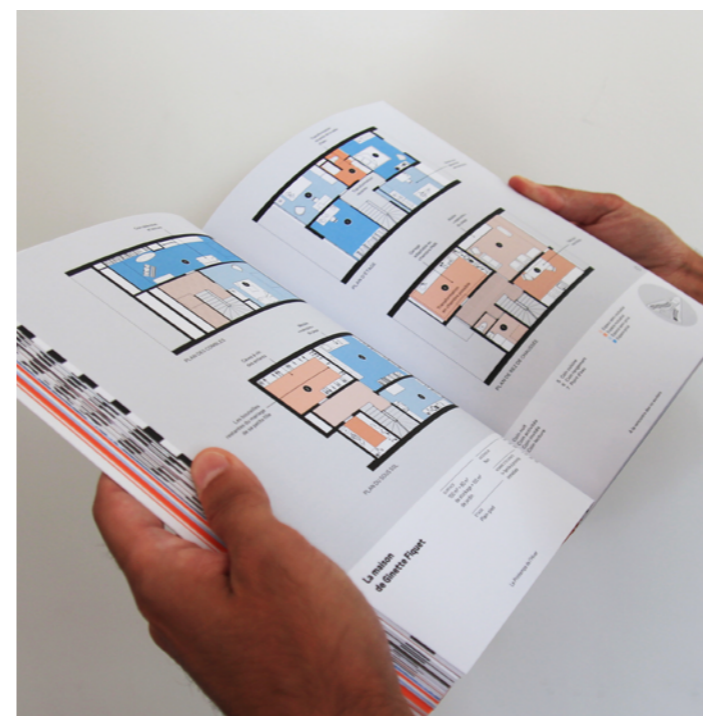
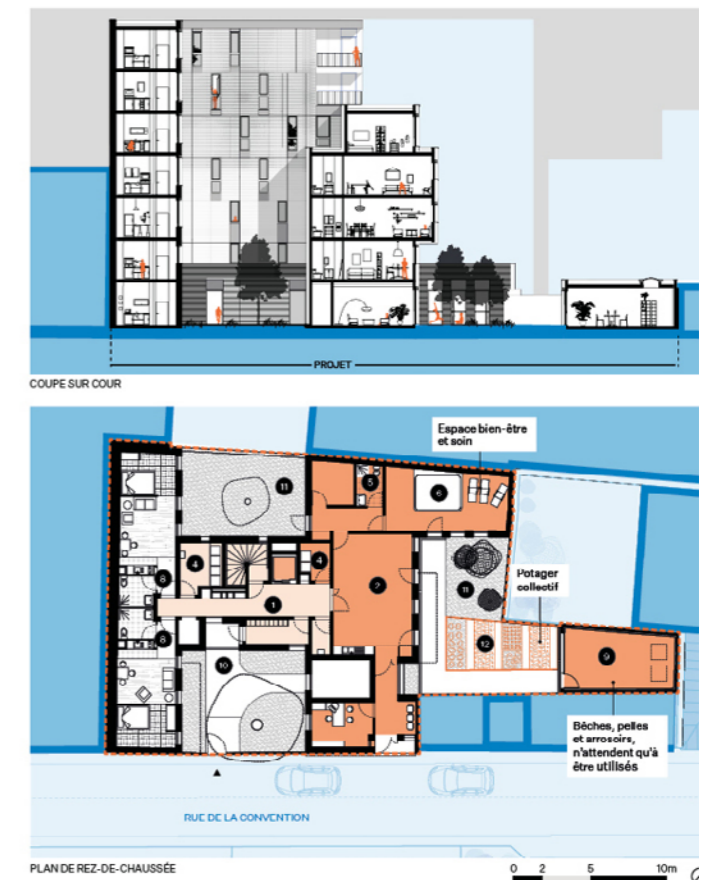
Site
**Greater Paris Area
 France**

Authors
**Meriem Chabani
 (New South)
 Aurélie Barbey
 Guillaume Sicard
 Alexandre
 Sfintesco**

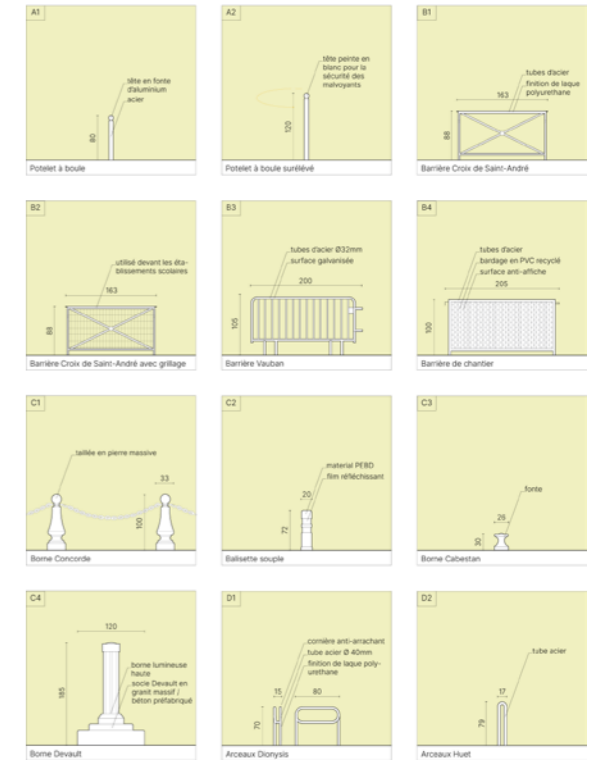
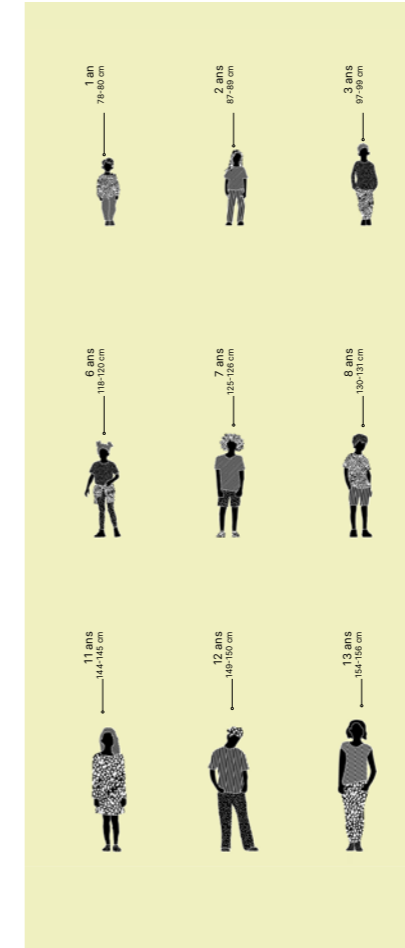
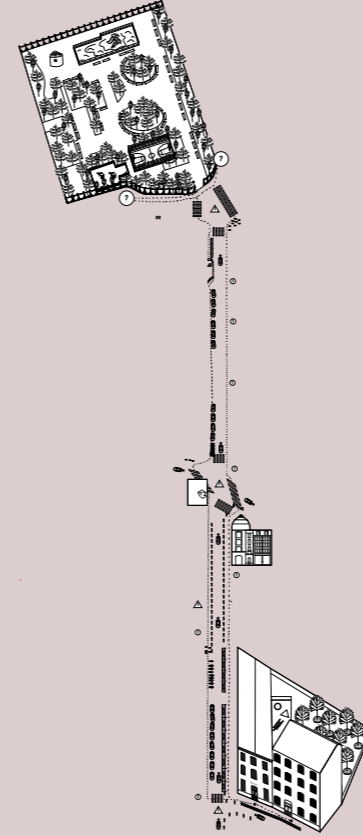
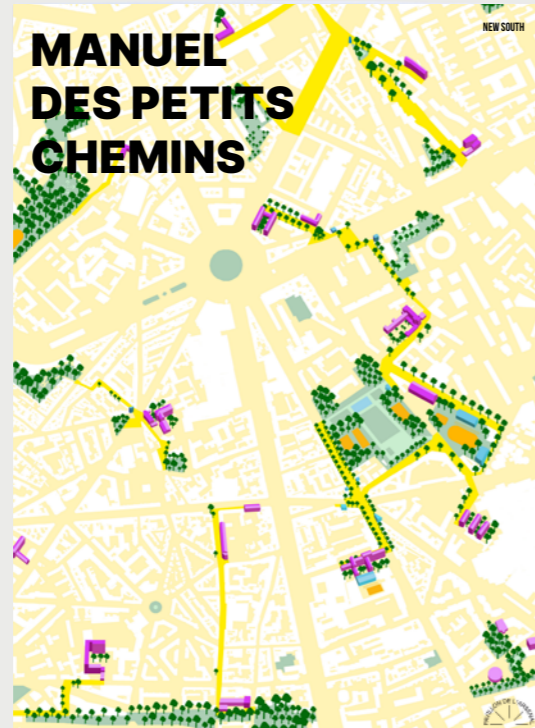
Graphic design
Travaux Pratiques

Budget
150K €

Dates
2019-2021



STUDY - CHILDREN IN THE CITY



→ Analyse du mobilier parisien et de ses capacités de transformation

STUDY ON THE PLACE OF CHILDREN IN THE CITY OF PARIS, WITH PRODUCTION OF AN INCLUSIVE PLANNING GUIDE

Paris is struggling to keep its families, an exodus worsened by the Covid 19 crisis, with an “unprecedented 5% drop” in enrollment in its schools at the start of the 2021 school year. The city is taking stock of this challenge, and is developing numerous initiatives for children and schools. The “Manuel des Petits Chemins” proposal complements these approaches and aims to deploy a network of public paths designed for children: like cycle paths, it is a soft mobility network. , designed on a city scale.

The hypothesis is as follows: the connection between two places of interest for children, the school and the park, is an opportunity to weave a walk that enriches and transforms all the components crossed.

This involves public space, street furniture, the notion of play, sport, interaction with local shops, and of course the landscape.

New South wishes to approach public space as a learning space and more broadly, as sociologist Sonia Lavandinho puts it, “to increase happy miles”.

Commissionner
Pavillon de l’Arsenal

Site
Greater Paris Area
France

Authors
New South

Graphic design
Travaux Pratiques

Budget
30K €

Dates
2022-2024



AGE-INCLUSIVE PUBLIC SPACES (VERNON, FR)



TRANSFORMATION OF PUBLIC SPACES IN THE CITY CENTER

The requalification and redevelopment of public spaces in downtown Vernon aims to contribute to the influence and experience of this medium-sized town, known for its proximity to Giverny.

This vision involves the desire to keep local commerce alive, to bring aesthetic added value to urban developments and to support the evolution of uses including soft modes and access to public transport. By implementing a unique and unifying coating, sanded concrete, the ground in the city center becomes a shared surface. This material is articulated by a raster layout whose rhythm is designed to integrate street furniture, vegetation, lighting and advertising and information devices, as well as technical and security features.

The three central squares of the city center are reorganized as places of conviviality, suitable for multiple uses. They constitute the basis for a renewal of urban practices in the city's public space. Their layout is particularly careful with variations in the concrete frame and the integration of other existing materials such as brick or stone.

Commissioner
City of Vernon

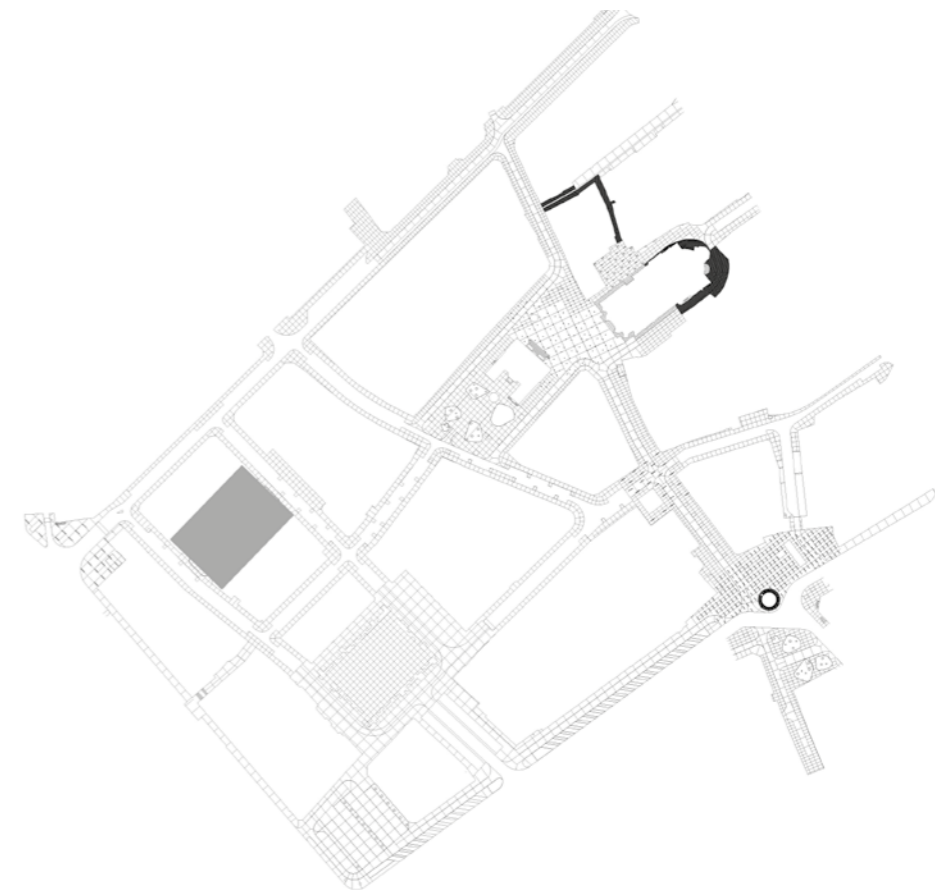
Site
Vernon, Normandy

Team
**New South
(architects),
Majma, Lafayette,
Suez, Bollinger-
Grohman,
Etablissement, ON**

Size
6.6 ha

Budget
14M €

Dates
**2018-2025
Construction
ongoing**



AGE-INCLUSIVE PUBLIC SPACES (VERNON, FR)



AGE-INCLUSIVE PUBLIC SPACES (VERNON, FR)



AGE-INCLUSIVE PUBLIC SPACES (VERNON, FR)



SOUTH SOUTH COSMOGONIES

→ **Centering overlooked forms of knowledge from the Global South**

MEDITERRANEAN QUEENDOM (VENICE, IT)



HERALDIC CARPET OF A MEDITERRANEAN QUEENDOM

Our participation to 18th Venice Biennale draws upon the diasporic history of Meriem Chabani's Algerian family to map a territory defined by interconnected domestic spaces. Our Queendoms are domestic spaces ruled by women, who care for, maintain, and transmit resources, value, gifts, medicine, heirlooms, furniture... from one house to the next, across the Sea.

The carpet is the medium and herald for this Queendom, displaying its spaces, its functions, the intimate and powerful elements that give it its force and its role as the stretched space that contains and sustains the Algerian diaspora. The carpet is deployed, for warmth, for comfort, for prayer. The carpet makes home.

Carpets underline the domain of the women of my family, delineating a Queendom that stretches across continents.

The visual aesthetic of the carpet combine three elements:

- A Mediterranean landscape: the climatic and historical context of our Queendom, influencing its spatial form and content in multiple aspects;

- A domestic space: a continuous domestic interior within which the Queendom is elaborated through the practice of care;

- A heraldic register: a symbolic celebration of the elements that specify the Queendom.

Commissioner
**14th Biennale
Architettura, Venice**

Site
Central Pavillion
Giardini, Venice
Italy

Curation :
Lesley Lokko

Team New South :
Meriem Chabani
John Edom
Mélissa Dyminat
Marine Giloupe

Dates
2023



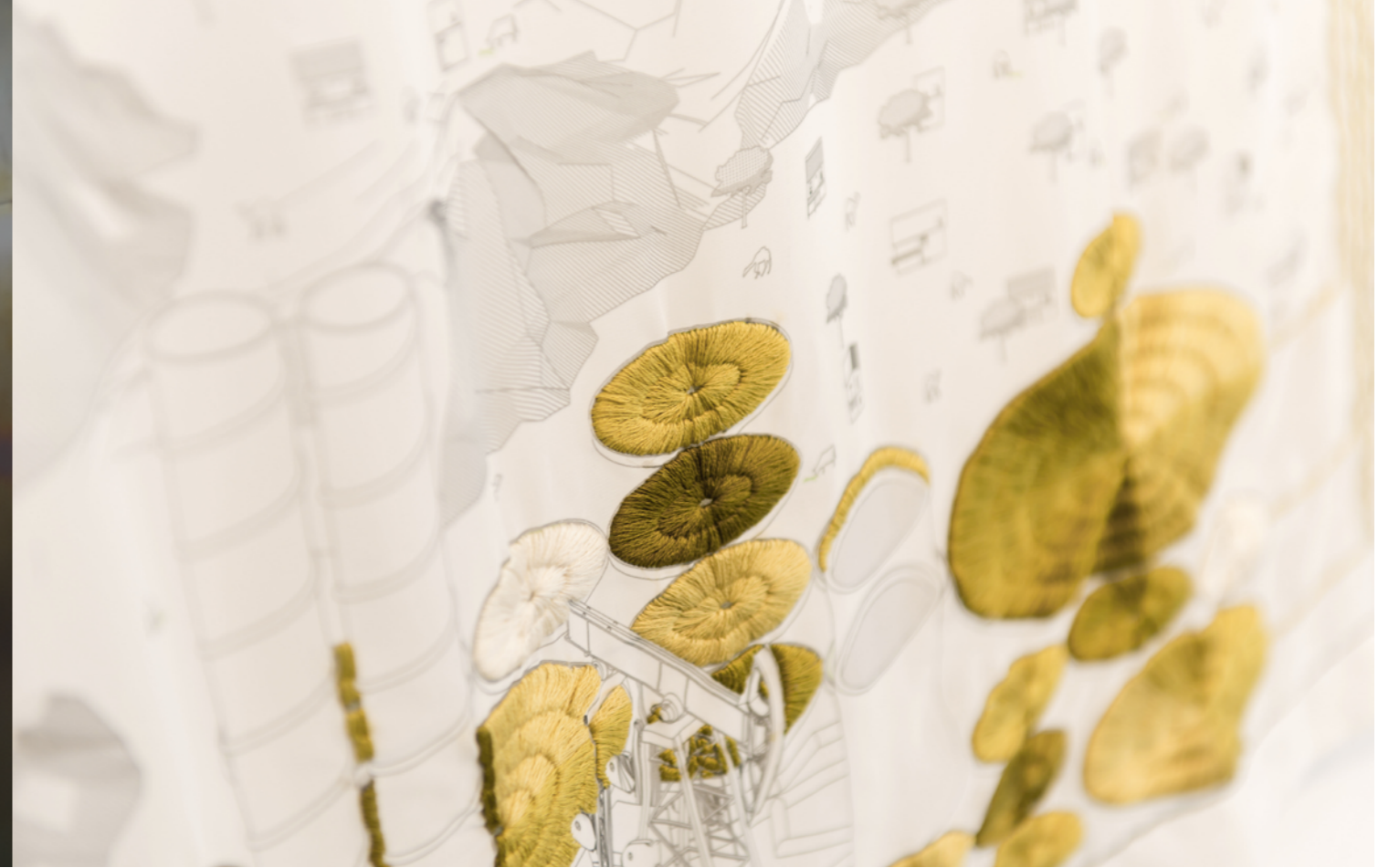
MEDITERRANNEAN QUEENDOM (VENICE, IT)



The carpet was designed and handmade by our team



'IF ALGAE MATTERED', AN ATLAS OF THE MEDITERRANEAN CONTINENT (ISTANBUL, TR)



The Mediterranean Sea has historically been a locus of power relations. Located at the intersection of Africa, Europe and Asia, it brings cultures together through the facilitation of trade, transport and cultural exchange. At the same time, these benefits have been accompanied by a desire for control: entangled amongst myriad commercial, political, and legal lines, the Mediterranean is an area overlaid with - and defined by regulations, borders and limits, and encircled by permanent conflict.

Over time these lines - the dynamic traces of interested manoeuvres and struggles for control - have grown more abundant, transforming the Mediterranean from a fairly small sea into a strategic battleground patterned by a vast constricting network of wealth and associated power. Throughout history the Mediterranean has witnessed the rise and fall of vast empires. But what lies ahead?

This speculative portrait of the Mediterranean finds itself in a not-too-distant future where algae has become a highly sought after resource. Its potential as biofuel, food and fertilizer in a context of increasingly acute scarcity begins to reshape the Mediterranean economy. The emergence of a new strategic resource causes the distribution of power to be redrawn as the constricting lines take on new forms.

A new economic and political reality causes the redistribution of power centres, reorienting the hegemonic North-South dynamic and prompting a dynamic territorial re-imagining of what previously seemed unchangeable.

Commissioner
**4th Istanbul Design
Biennial**

**Istanbul
Foundation for
Culture and Arts
(IKSV)**

Site
ARTER
Istanbul, Turquie

Curation :
Jan Boelen
Nadine Botha
Vera Sacchetti

Team New South :
Meriem Chabani
Maya Nemeta
Evan Giles

Dates
**22 September -
4 November 2018**



NEW SOUTH

Contact

Meriem Chabani
mc@newsouth.fr

+336 08 01 11 44